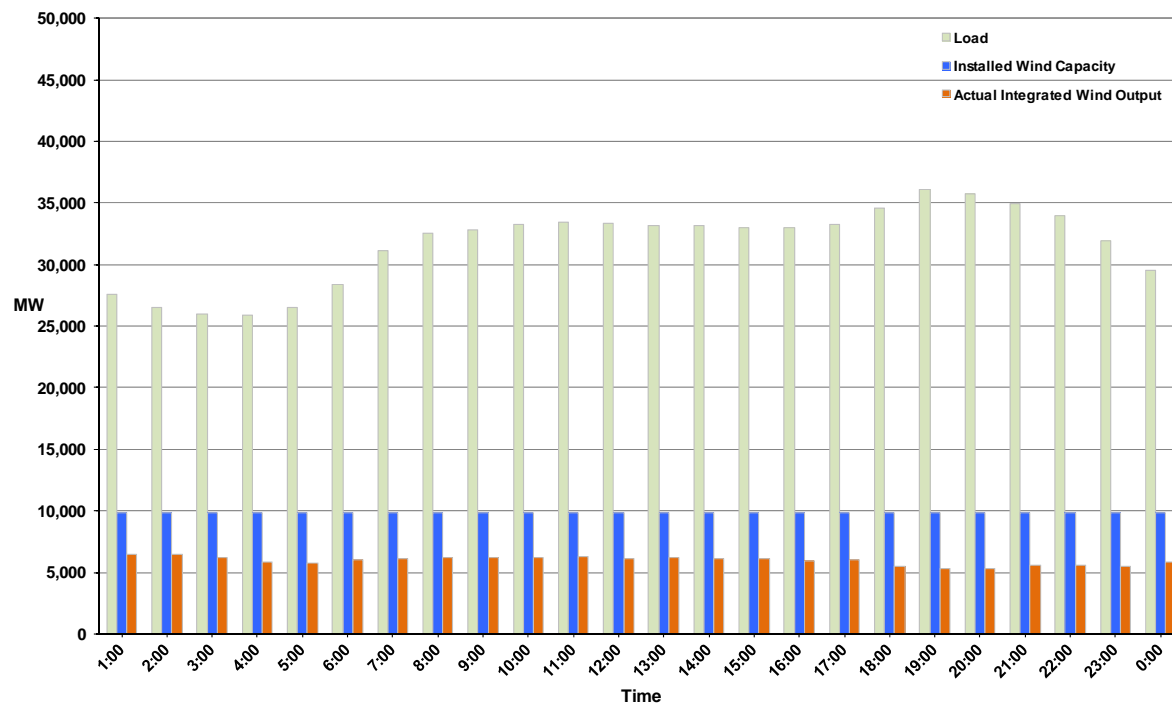




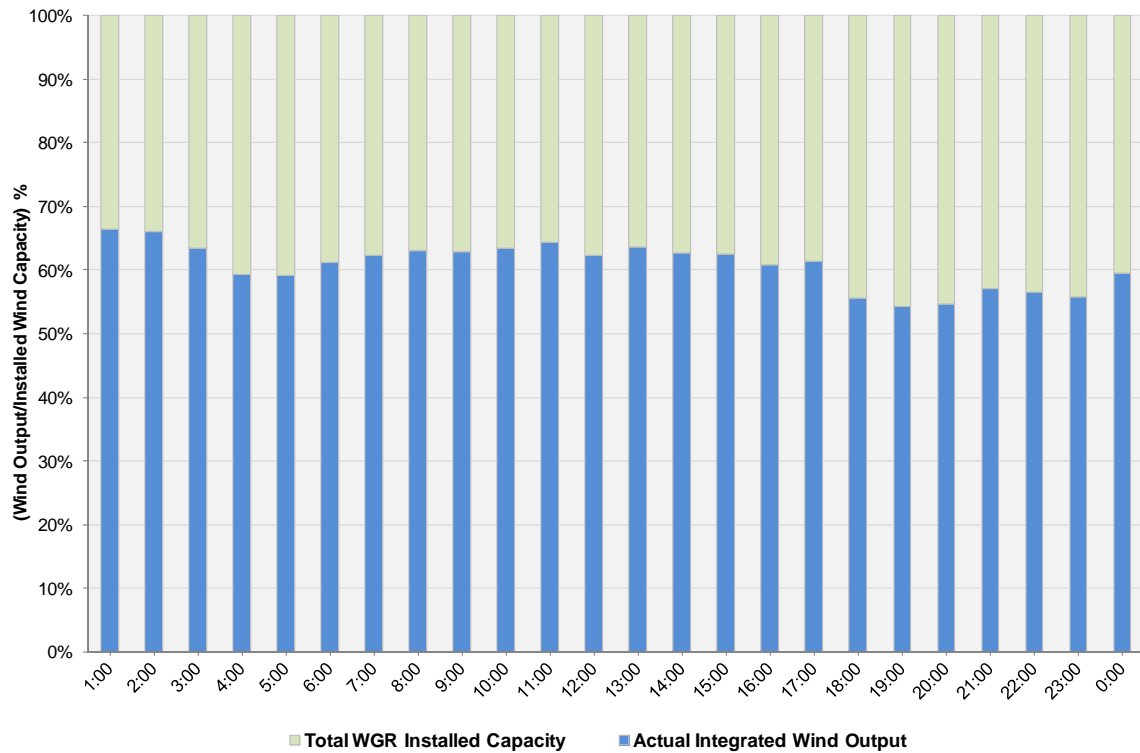
ERCOT Grid Operations Wind Integration Report: 12/19/11

Peak Load	36,076 MW
Load Peak Hour	19
Wind over Peak	5,321 MW
Wind Record 10/07/11	7,400 MW
Max Wind Value	6,739 MW
Wind Peak Time	00:19
Wind Integration %	24.25%

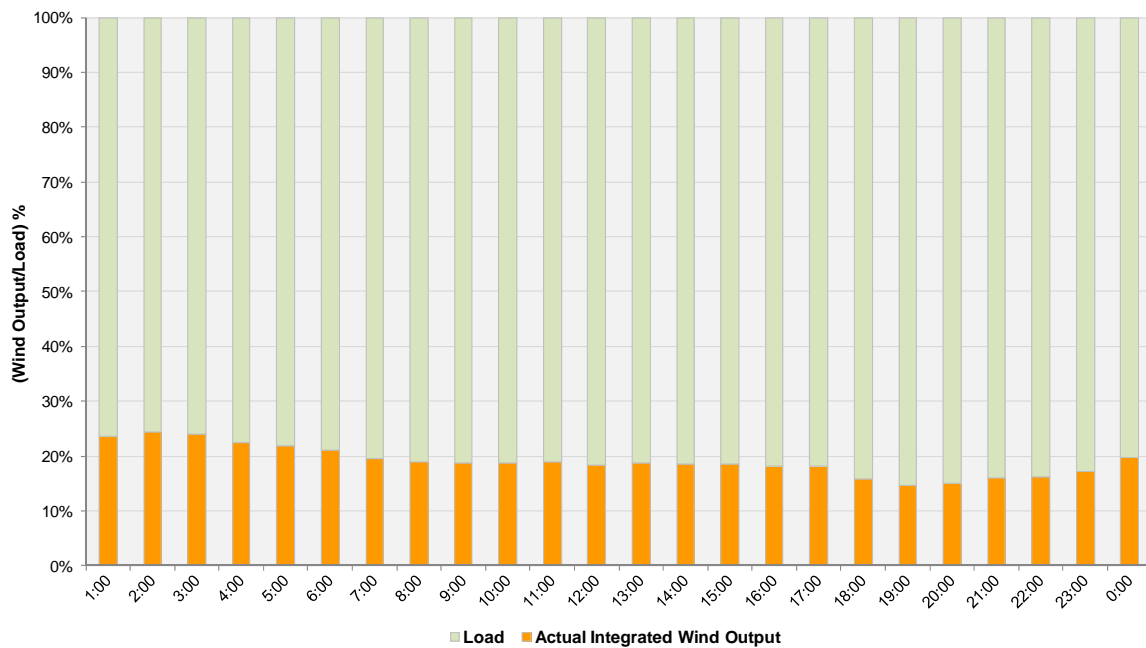
Hourly Average Actual Load vs. Actual Wind Output
12-19-2011



Actual Wind Output as a Percentage of the Total Installed Wind Capacity
12-19-2011



Actual Wind Output as a Percentage of the ERCOT Load
12-19-2011



ERCOT Load vs. Actual Wind Output 12/12/2011 - 12/19/2011

